

Guangdong Liyang Baiuo Electric  
Appliance Co., LTD  
LEEYO

**PATHFINDER : MINI  
DESKTOP RANG HOOD**

# Buy the crowd that the desktop smoke lampblack machine, scene, mood

## crowd

[Fashion youth]  
[Delicate Women]  
[Quality treasure Ma]  
[Middle and high  
income groups]  
.....

## scene

[Home hotpot / Roast]  
[Home gatherings with  
friends and family]  
[And the children at home  
hot pot /  
roast meat]

## mood

[A Happy Social Life]  
[Show off the good  
stuff]  
[Delicate / Quality of  
Life]  
[Ritual sense]

[Rental House /  
Apartment]

Review, combined with the preliminary discussion:

## Who might use a desktop range

They are  
"An interesting lifestyle family with a sense of ritual"

crowd

[Fashion youth]

**Pay attention to the sense  
of ceremony**

[Quality treasure

Ma]

[Middle and high  
income groups]

scene  
ritual"

[Home hotpot / Roast]

**Pay attention to quality**

friends and family]

[And the children at

home hot pot /  
roast meat]

[Rental House /  
Apartment]

mood

[A Happy Social

**Pay attention to fun**

[Show off the good  
stuff]

[Delicate / Quality  
of Life]

[Ritual sense]



*They are passionate about emotional communication*

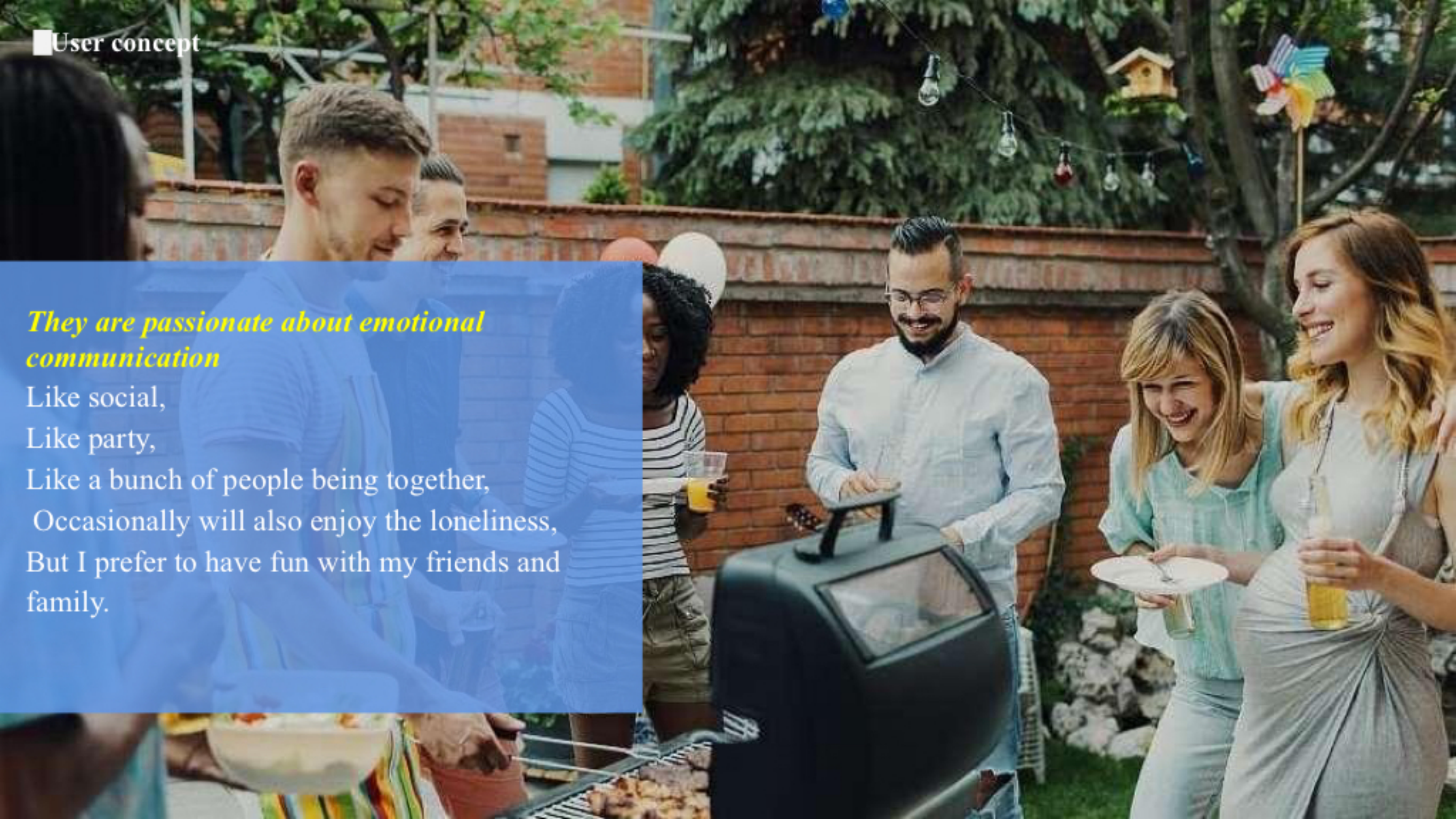
Like social,

Like party,

Like a bunch of people being together,

Occasionally will also enjoy the loneliness,

But I prefer to have fun with my friends and family.







## User concept

*They want to live with a sense of ritual*

Life can be ordinary,

Life cannot be plain,

In specific matters,

Bring in some unique supplies or rituals,

Let the ordinary life, become different.





*They are happy to try new things*

New species are not scary,  
To look ahead and think to be boring,  
As long as it's a real new product,  
We are not afraid of consumption and are  
willing to try new things.





**The kitchen scene**

**Living room scene**

## Applied to a variety of kitchen utensils



One-time barbecue stove



Electric baking plate



Multi-function pot



electric chafing dish



One person eats a small electric pot




Takeout hot pot service



**30** million units +  
stock market

**1501** %  
rate of rise

**90** %+  
Household  
share

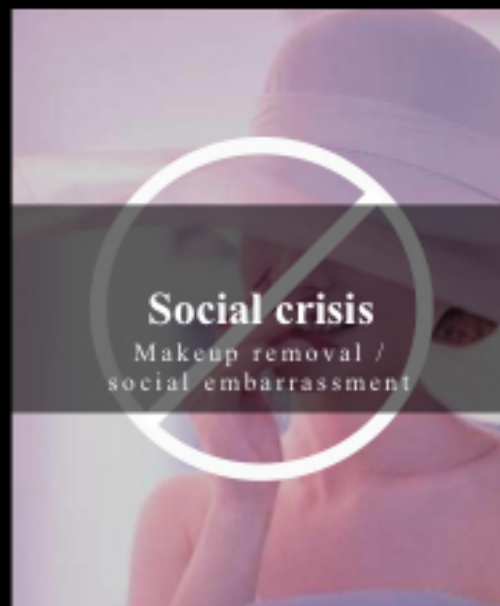
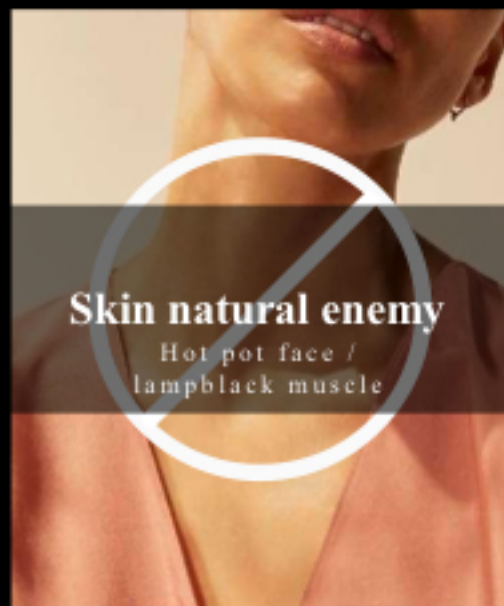
A kitchen scene featuring a stainless steel pot with a lid on a stove. The pot is in the foreground, and the stove's control panel with a digital display is visible in the background. The image is dimly lit, with a dark overlay.

**Table electricity allows young people to eat  
more flexible and convenient**

**At the same time also brought more  
"lampblack problem"**



# The lampblack problem



# "Smoke-free light kitchen doctrine"

Hot pot and barbecue party



One person eats light kitchen



Easy, clean and healthy condition  
Let every urban youth can enjoy the delicious food  
freely





Refuse to smoke a happy party

## The MINI desktop lampblack machine

**new product**

Exquisite and small strong suction multiple clean smoke carefree control

• rated voltage	DC/24V
• Power interface	DC plug
• power rating	24W
• Wind speed mode	Three gear adjustment (silent / hot pot / baking)
• The biggest noise	<65dB(A)
• maximum wind velocity	3.5m/Min
• Fan speed	2000~3600RPM
• product size	L 210 * W 167 * H 374mm
• packing measurement	L 445 * W 270 * H 245mm
• The first filter	Polymer-based polymer, $\phi 126 * 0.5\text{mm}$
• Condensation network	Aluminum alloy condensing net $\phi 126 * 3\text{mm}$
• Net weight of products	1.3kg

# Upgrade contrast



- DC brushless electric machine
- 30W power
- Turbine wind wheel
- Two gear speed  
(Silent 2600 / common 3600)
- Common gear noise is 70dB  
(30cm from side)
- Aluminum alloy condensing net
- 200mL oil collection box
- 40 mL \ 2 hours  
(Data comes from-hot pot scene)

**Desktop Range Hood 1.0**



- DC brushless electric machine
- **24W power**
- **Mixed flow channel technology**
- Two gear speed adjustment + one key burst back  
(Silent 2400 / common 3000 / blast 3600)
- **Common gear noise: 65dB (A)**  
(30cm from side)
- Design of electrophoresis of aluminum alloy condensing net  
(5 minutes in the hot pot scene)
- **Food tonic light (the first)**
- A 200-ml oil collection box
- **100mL over 2 hours**  
(Data comes from-hot pot scene)

**Desktop Range Hood 2.0**



## **A key stir-fry Hurricane suction**

Simple operation is easy



**Exclusive directional suction multiplication technology**  
**Fully absorption table lampblack**

Even in the living room,  
you can also get rid of the lampblack problem





**Increase the wind pressure, strengthen the wind force**  
**Fully absorption table lampblack**

Even in the living room,  
you can also get rid of the lampblack problem











# Three color choice Give life more color

With different styles of home environment





# A variety of color options

With different styles of home environment



# Q & A

1. In what scenarios, is it easier to test and use products to achieve results? achieve the desired effect?

**The best scene is the living room or dining room, please cooperate with the cooking pot to use, do not get close to the open fire.**

2. What factors usually affect the smoking effects of products? sound?

- ① **ambient air flow and direction (air conditioning, fan);**
- ② **The height of the pot body and the distance between the product and the pot body (the product and the pot body to keep an effective and appropriate distance, the effect will be better, not the closer the smoke, the better the smoking effect);**
- ③ **The air outlet shielding, as far as possible to let the air outlet is not too much occlusion.**



# Q & A

## 3. How to clean the current products?

---

**Based on the use scenario of the product, there is oil on the surface after use, which is a normal phenomenon. It is recommended to scrub the surface with a cloth in time, and remove the filter with warm water + cleaning. After soaking, the requirements of the safety regulations and the stability of the wind wheel. Do not flush the whole machine with water.**

---

## 4. Are there currently any different filters as an alternative?

**We continue to test the filters and ratio of different materials (such as PAPA network), but it takes time to verify repeatedly, and different performance types of filters will be introduced (for Requirements for different scenarios: hot pot, barbecue, second-hand smoke, etc.). The current filter screen is a scheme that integrates the relative balance effect of the scene.**

**THANK YOU**

**contact way:**

**Tracy Li**

Guangdong Leeyo Pilot Electrical Technology Co., Ltd.

Mob/What's APP/Wechat: +86 18824929685

Email: [tracy.li@leeyopilot.com](mailto:tracy.li@leeyopilot.com) [tracyli@sgh-air.com](mailto:tracyli@sgh-air.com)

Web: [www.leeyoroto.com](http://www.leeyoroto.com)

Add: Floor 3-2 Xinyou Road, Tianhe Industrial District, Ronggui, Shunde, Guangdong, PRC 528303